

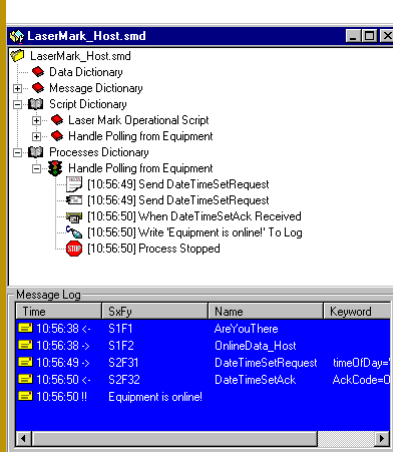
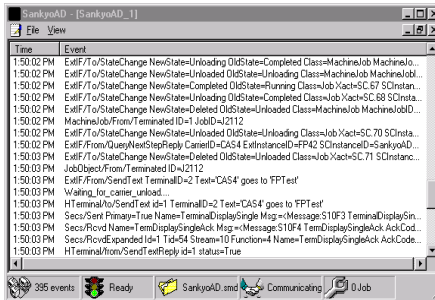


# HOST DEVELOPER

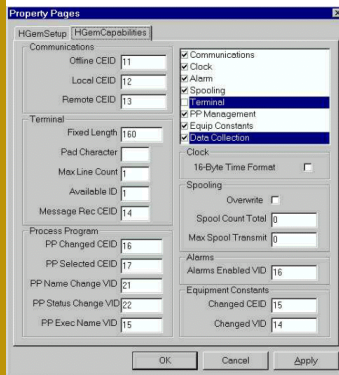
## SECS/GEM Based Factory Host Development Software

Configure an equipment's specific SECS message definition using the **TESTConnect** explorer.

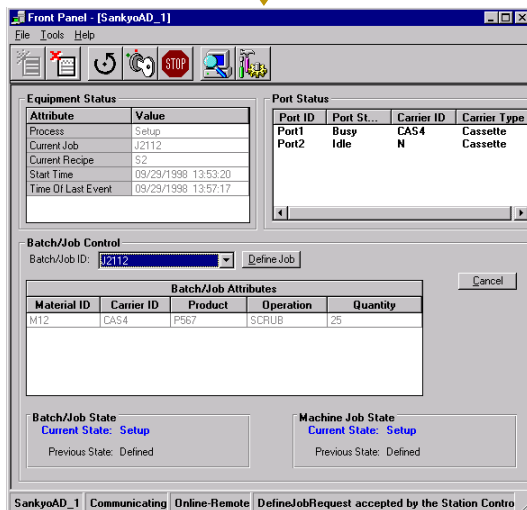
Make use of simple drag/drop features to validate the equipment's interface as well as develop equipment emulators.



Use the sample station control objects as a starting point for your own factory-wide components.



Build your host scenario using the provided libraries, OCXs, Event Bus and sample application source code.



Host Developer provides the user with the software tools to build, integrate, test and deploy SECS/GEM station controllers.

- Complete set of ActiveX/COM components for all host-side SECS/GEM capabilities.
- *HostGEM OCX* facilitates and automates the configuration and management of the GEM interface by handling the creation and initialization of the GEM objects.
- SECS messages are not embedded in the source code and can be modified at runtime and without compiling.
- A complete testing environment with *TESTConnect* for SECS message and scenario emulation without development.
- *SMSD*, a SECS communication server providing SECS-I and HSMS communication simultaneously, in addition to two-way SECS-I/HSMS conversion.
- A fully working sample station controller complete with source code, and front panel graphical user interface.
- HTML based tutorials & reference material

Host Developer's open technology is not tied to any proprietary architecture and takes full advantage of established Windows NT/2000 based development environments such as Microsoft Visual Studio.

Distributed architecture allows for easy integration with third party components such as user interfaces, enterprise message buses and cell controllers.

Host Developer and TESTConnect are copyrights of Cimatrix, inc.

Generate Your Host SECS/GEM Interface

11800 NE 95th Street  
Suite 260  
Vancouver, WA. 98682  
USA

Tel: 360-944-9890  
Fax: 360-944-1935

INFO@sdiusa.com  
www.sdiusa.com



SYSTEMATIC  
DESIGNS  
INTERNATIONAL, INC.